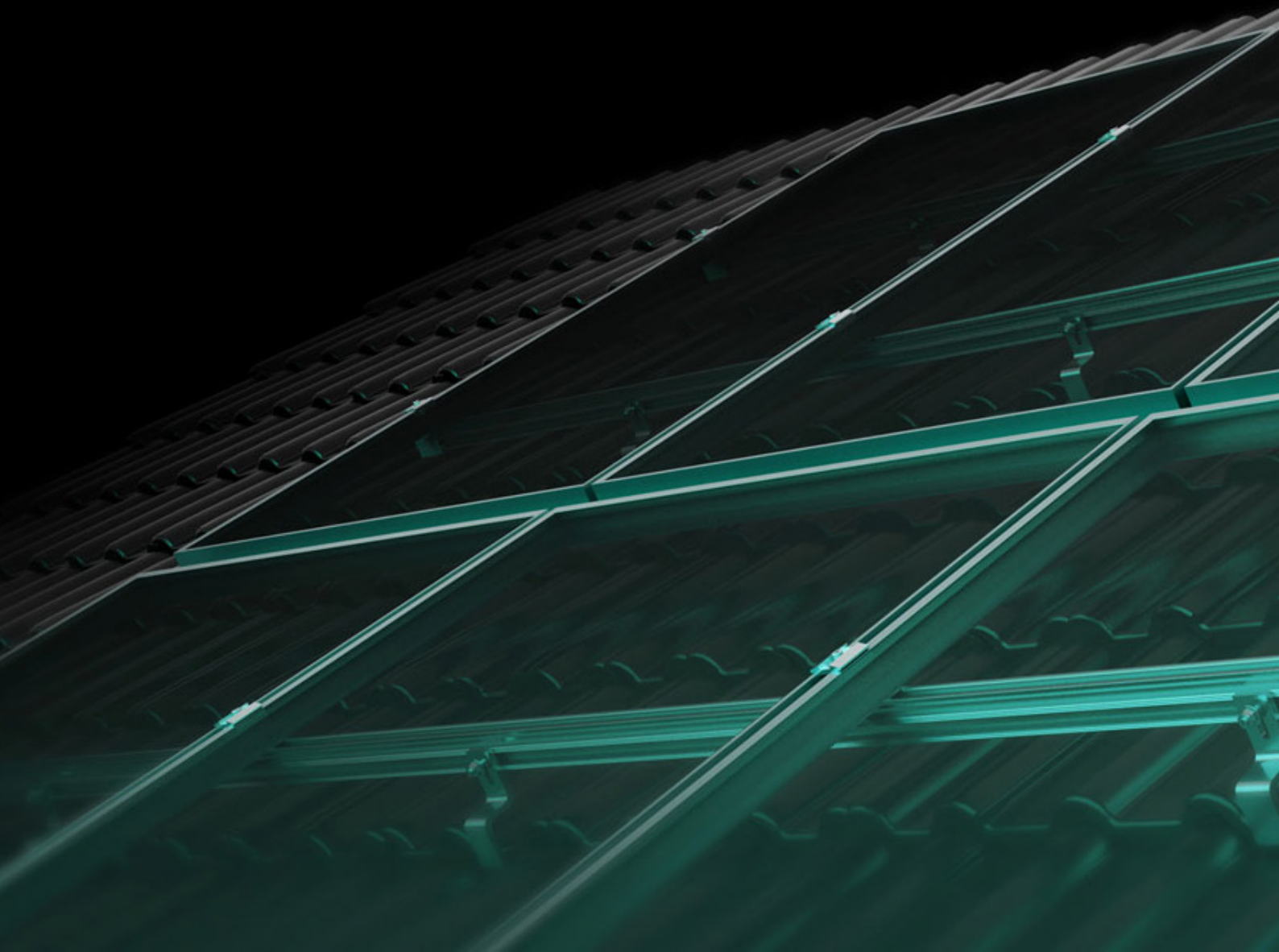
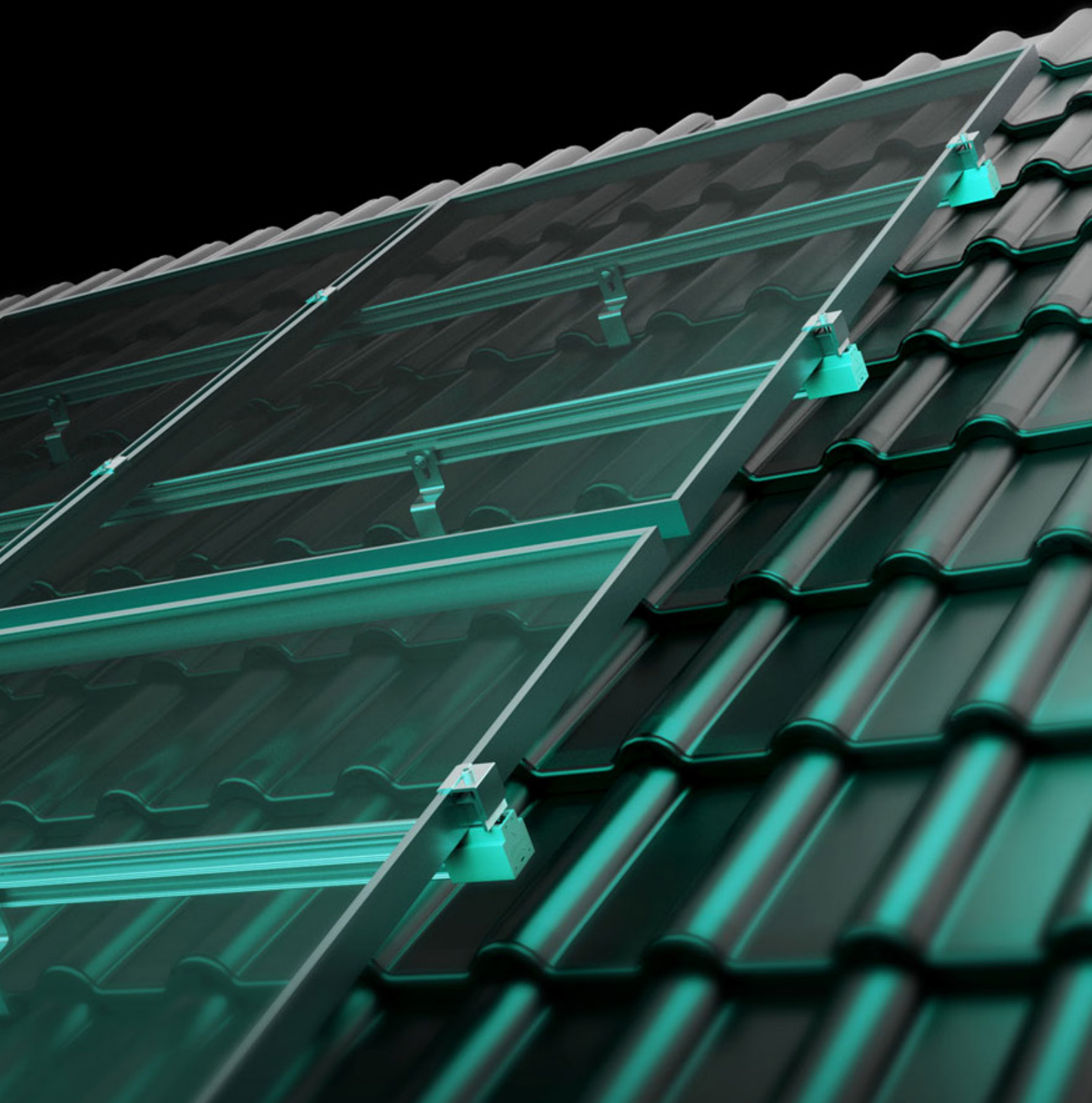


Growing along with the energy transition



As market demand for solar increases, so companies within the sector are expanding their premises and their product ranges. Among these is Mounting Systems GmbH, a business that is taking its solutions for pitches and flat roofs to new heights.



As Germany's only manufacturer of solar mounting systems, Mounting Systems GmbH, located in Rangsdorf, near Berlin, specializes in the development and manufacture of the entire product range for pitched and flat roofs, as well as solar carports and ground-mounted systems. It has been producing its quality products Made in Germany since 1993.

In the international market, Germany as a production location stands as a guarantee for

value, reliability and a high level of quality.

Both with national and international customers and trading partners, Mounting Systems' products are in great demand and have an excellent and unique reputation in the PV industry. The reasons for this are simple: the use of high-quality materials coupled with well thought-out, innovative concepts, short supply chains and a transparent corporate mission statement.

More space, more possibilities

As the company expands, an additional location in Rangsdorf is another great opportunity to drive the growth of its existing headquarters and, along with it, the energy transition.

To quickly supply customers and partners with goods, a total area of additional 25,677 m² will be available from spring 2023. The new building located next door to the



headquarters will be used as an extension production and logistics site. In addition, office space of 1,905 m² will be created, which will also create new jobs.

From the idea of a new innovative flat roof system and the perfect balance between function, durability, design and cost

The latest innovative development from Mounting Systems is the first release of the next generation of flat roof products designed for ease of installation and a multi-functional possibility. After many in-depth consultations with installers and developers across the globe, the company decided to offer a 10° south, a 15° south and a 10° east west flat roof options in one new system.

The same key components are used for all three variations, so simply by changing the position of the supports, the customer can have three different inclinations of the same system for mounting on flat roofs. The new flat roof system is equipped with fully integrated cable management.

Hooks are attached to the module supports, into which the installer can attach the cables between the modules. The base rail is designed to provide sufficient space for cable containment, and its cover allows the tradesman to lay the cables in a protected manner. The rails are also equipped with gutters that provide additional space for cables so that they do not have to lie in water on the roof.

Make it as easy as possible for the installer

The new flat roof system is designed so that the installer only needs minimum tools to construct it. Simple locking connections are used to ensure quick assembly across the system, rapidly reducing the overall installation time.

All key components are manufactured using the die-casting process, which means there are no sharp edges on which the tradespeople could damage cables or injure themselves.

Significantly less ballast required

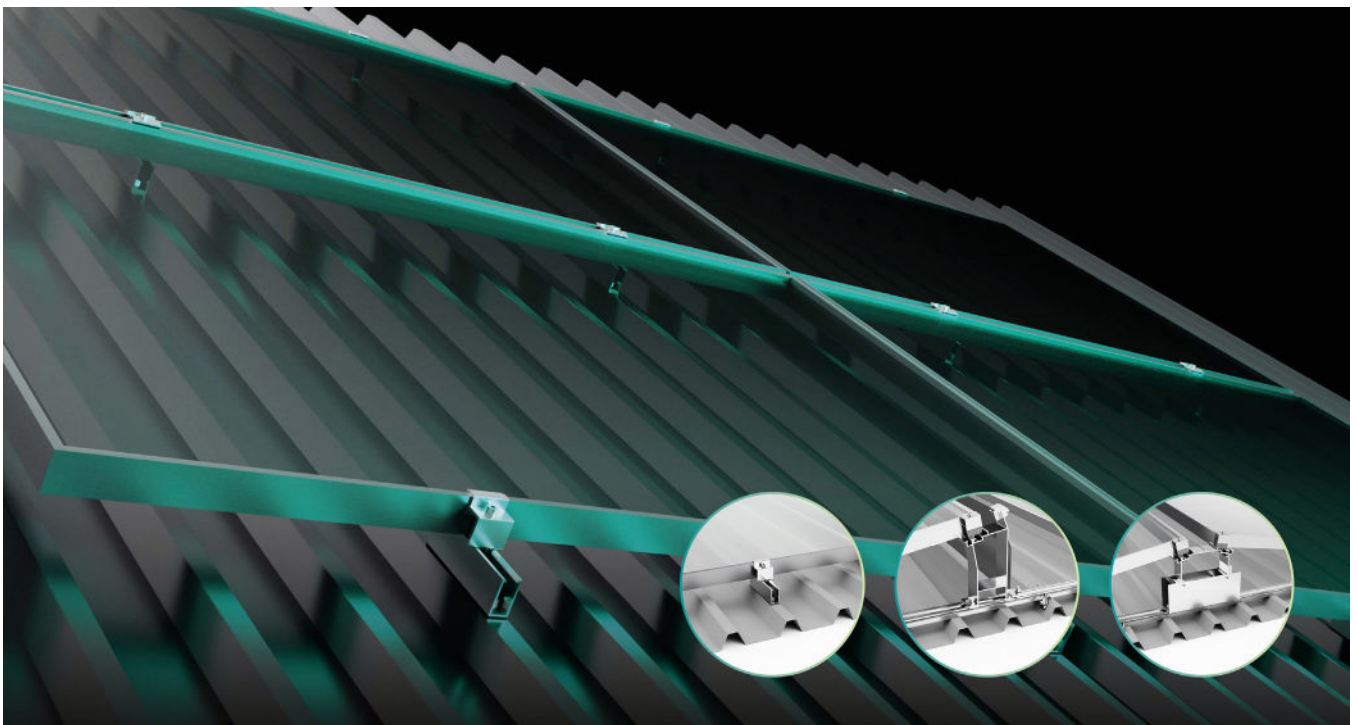
'Initial findings show very favorable ballast results compared to many existing systems on the market,' says Jason McCabe, director of products and engineering. 'The key to this is that we worked on a very aerodynamic design that incorporated different wind deflectors in critical positions, and state-of-the-art wind tunnel expertise.'

'Additional testing was carried out to really focus on creating a low ballast system, reducing the loads on the roof and being compatible with various roof coverings.'

The system can be ballasted on roofs up to 30 meters high as standard, with higher buildings available on request. The ballast is inserted into the newly developed tray, which can accommodate a vast amount of different size blocks, which are commonly found across Europe and further afield.

The all-in-one solution for your vehicle

The E-Port Home offers immediate benefits and long-term security for stakeholders, be they customers, investors, developers and all those responsible for engineering,





procurement and construction. A quick and easy planning guide for seamless design and a digitized installation manual for user-friendly learning are available.

Reliable technology

In combination with trapezoidal mounting technology, the E-Port takes advantage of the minimally invasive and highly reliable BR 1/15 rail, which allows for convenient horizontal installation of solar modules. The E-Port is characterized using a trapezoidal steel sheet with a drainage solution.

Intelligent design

Designed to use the electricity generated and meet the special requirements of the charging infrastructure. The battery and inverter systems can be integrated into the design. A trapezoidal steel sheet with a drainage solution ensures complete watertightness. The complete system is supplied in black, including the module clamps, which give the system a slim and elegant appearance.

Design your own private energy transition

The E-Port Home is a durable, flexible and highly efficient solar carport that will save you money for many years. The highest quality material and workmanship guarantee you many years of enjoyment and maximum yields. In addition, you receive a 10-year manufacturer's product guarantee. The smart design enables a quick and easy assembly. Mounting Systems manufactures durable and innovative products, which are state of the art and of highest functionality.

Your guarantor for sustainability

Above all, sustainability also means a long-term approach. This is why Mounting Systems develops durable and recyclable products at affordable prices. Making the most of your own space and becoming more energy independent is not only a worthwhile economic decision, but also contributes to a healthy climate, a clean environment and an emission-free future.

Independent of rising electricity prices

Switch now to your self-generated solar power through your own power plant on the carport roof.

E-Port Home Double

The E-Port Home Double solar carport provides a parking space for two cars at once. The E-Port Home Double is equipped with 15 modules that provide up to 4500 watts, which is roughly equivalent to the annual consumption of a 4-person household.

Similarly, the E-Port Home Single is the perfect solar carport for private households with a parking space for one car. The 10 installed solar modules provide up to 3000 watts and can be used for charging the car as well as for self-consumption in the house. The E-Port Home is equipped with a rain gutter including downpipe and other essential features.



The flexible pitched roof system for almost all situations

The Pitched PV mounting system for pitched roofs combines robustness and flexibility at reasonable prices. The Click stone technology and the aluminum profiles make installation on pitched roofs easier for installers and reduce installation times overall. In addition to that, they offer a large variety of roof hooks with different thicknesses for roof stones, roof tiles, corrugated eternit, trapezoidal sheet, corrugated iron and standing seams.

Trapeze: the all-round mounting system for all common trapezoidal sheet metal pitched roofs

Thanks to the Trapeze PV mounting system, installers can install framed photovoltaic modules easily on almost all common trapezoidal sheet metal roofs. The robust rails are suitable for a wide range of trapezoidal shapes and load situations and enable height compensation.

Click stone technology for module fastening

Both systems, pitched and trapeze, are compatible with all clamps. These pre-assembled clamps can be mounted quickly and safely to all base rails of the internal click-system through the patented click stone. With universally adjustable clamps, installers always have the right clamps for framed and frameless modules in stock.

 www.mounting-systems.com

